

WinFrog Device Group:	OUTPUT
Device Name/Model:	SYNTHESIZER
Device Manufacturer:	
Device Data String(s) Output to WinFrog:	TTTT, READY
WinFrog Data String(s) Output to Device:	WWWW CCCC XnnnnYnnnnZnnnn
WinFrog Data Item(s) and their RAW record:	No data is recorded to the RAW files

DEVICE DESCRIPTION:

This outputs various data to a voice synthesizer. Included are a warning (WWWW), cancel warning (CCCC) and the vehicle coordinates. This device is designed to be operated with only one vehicle at a time. (WinFrog may have more than one active vehicle, but this device’s data item should only be added to one vehicle).


DEVICE CONFIGURATION INSTRUCTIONS

WINFROG I/O DEVICES > EDIT I/O:

Baud Rate: 9600
 Bits Per Character: 7
 Stop Bits: 1
 Parity: None

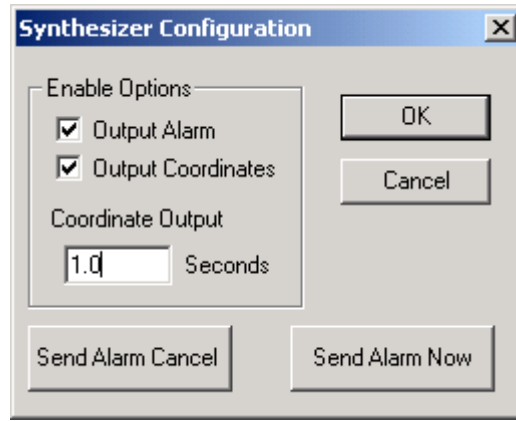
SETUP:

Alarm

Before the alarm may be sent to the synthesizer, the bell button labeled “LINE” () on the WinFrog main tool bar needs to be selected. Additionally, a line in the current Working Survey Lines file needs to have the Vessel Approach Alarm enabled and a tolerance of 1, 5 or 10 yards selected. When this is done and the vessel moves within this tolerance, the warning may be sent to the voice synthesizer and WinFrog will beep.

WINFROG I/O DEVICES > CONFIGURE DEVICE:

This device must be configured at the I/O Device window level. In the I/O Devices window, click the device name to select it, then right-click and select Configure Device. The Synthesizer Configuration dialog box appears, as seen below.



The above dialog box allows you to enable the output of the alarm and/or the output of vehicle coordinates automatically to the voice synthesizer and the rate at which to output the coordinates.

The alarm condition is determined if the vehicle that the OUTPUT,SYNTHESIZER,OUTPUT data item is added to gets within the specified tolerance to the selected survey line. The output of coordinates ceases if the alarm condition exists. The alarm may also be sent or cancelled manually by clicking the appropriate button. If the alarm is cancelled and the alarm condition still exists and the Output Alarm box is checked, the alarm will be sent again. In other words, to stop the output of the alarm, the Output Alarm option must be deselected. To stop the audible alarm in WinFrog, the "LINE" bell button must be deselected.

WinFrog will send the alarm cancel automatically if it receives the TTTT command from the voice synthesizer. However, as above, if the alarm condition still exists and the Output Alarm box is still checked, the alarm message will be sent again to the voice synthesizer.

WINFROG VEHICLE > CONFIGURE VEHICLE DEVICES > DEVICE DATA ITEM > EDIT:

Adding the SYNTHESIZER device creates the OUTPUT data item.

Data item: OUTPUT,SYNTHESIZER,OUTPUT

Attach this data item to the vehicle for which the coordinates are to be output. Only one should be attached to the vehicles available. (Note: WinFrog will not prevent you from attaching this data item to more than one vehicle.) There is no dialog to edit this device. The output coordinates are reference coordinates as selected by the operator, either the CRP of the vessel or coordinates of the tracked offset as selected by the operator.

TELGRAM SPECIFICATION:

TTTT, READY – sent from the synthesizer to WinFrog indicating that the device is ready.

WWWW - sent from WinFrog indicating that the alarm conditions exists.

CCCC - sent from WinFrog canceling the alarm.

XnnnnYnnnnZnnnn – grid coordinates of the operator specified offset.